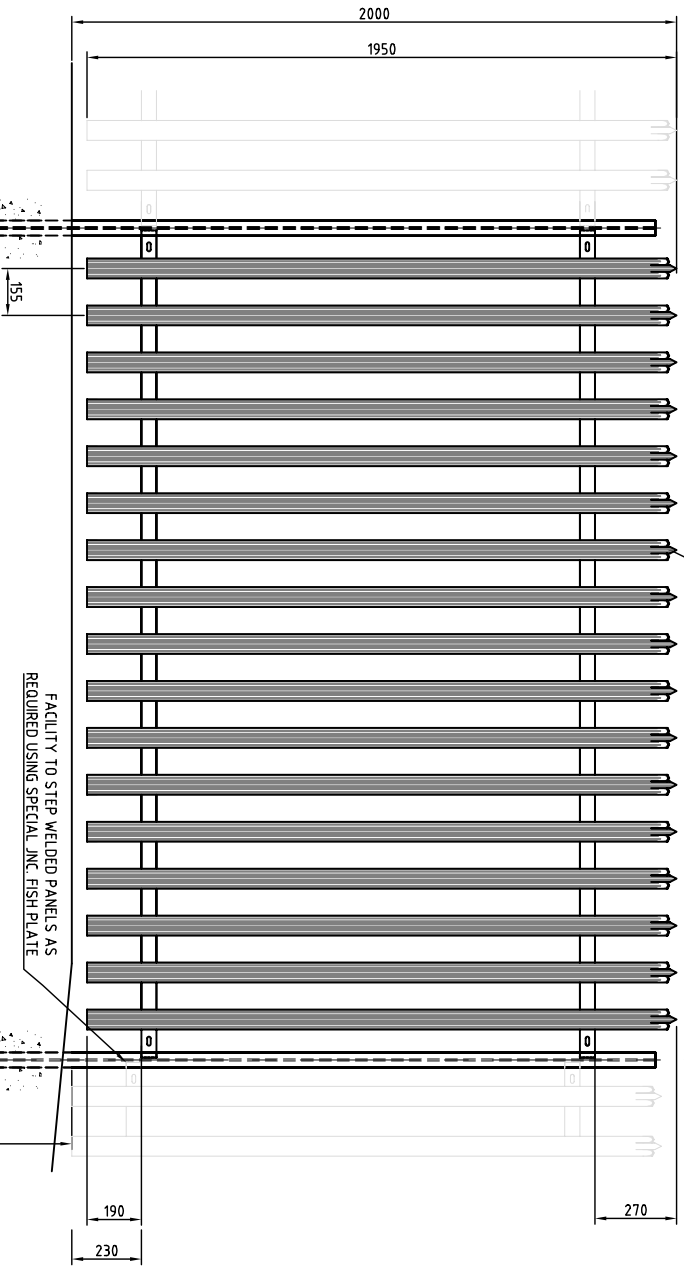


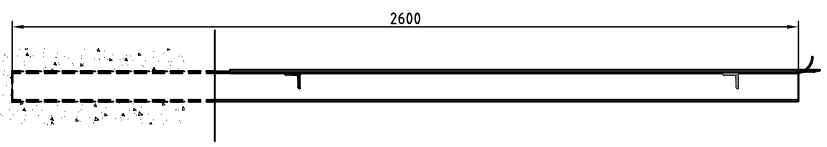
IMPORTANT: NOTE: SAMPLE DRAWING ONLY ACTUAL DIMENSION MAY CHANGE. DO NOT SCALE

17No. Pales PER PANEL
ALL PALES FULLY WELDED TO HORIZONTAL ANGLE

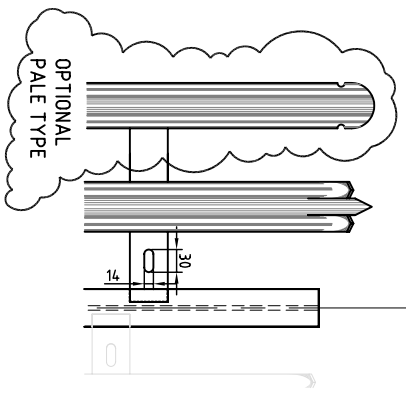


FRONT ELEVATION
scale 1/25

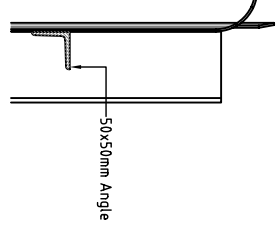
CONCRETE BASE
450x450x600mm



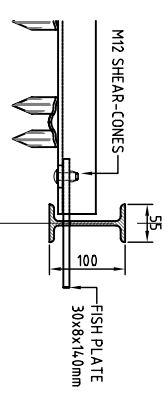
SIDE VIEW
scale 1/25



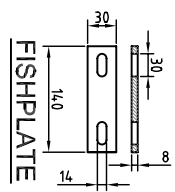
OPTIONAL PALE TYPE



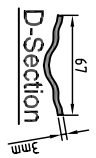
RAIL VIEWS
scale 1/10



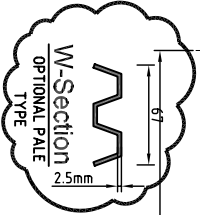
PANEL TO POST
scale 1/10



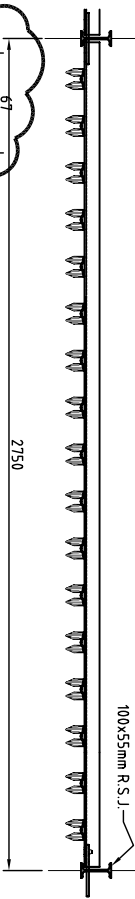
FISHPLATE



D-Section



**W-Section
OPTIONAL PALE
TYPE**



PLAN
scale 1/25

Drawing Title:	Typical JNC Pal Fence : H - 2.0M FOR INFORMATION ONLY		
Project/Client:	SAMPLE DRAWING		
Drawing/Doc No:	JNC/GP/M/20	By:	D.D.S. / App: JNC FENCING
Date:	04/11/02		



J.N.CUMMINS & CO.LTD
Industrial Fencing Contractors
Supply / Supply and Erection
Mayfield, Cashel, Co Tipperary
Tel: 00353 62 62214 Fax: 00353 62 62947
e-Mail: info@jncfence.com
www.jncfence.com